



National Fuel®

National Fuel Gas Distribution Corporation

Spring 2025 Marketer / Supplier Teleconference

National Fuel Gas Distribution Corporation

Spring 2025 Marketer/Supplier Teleconference

March 25, 2025

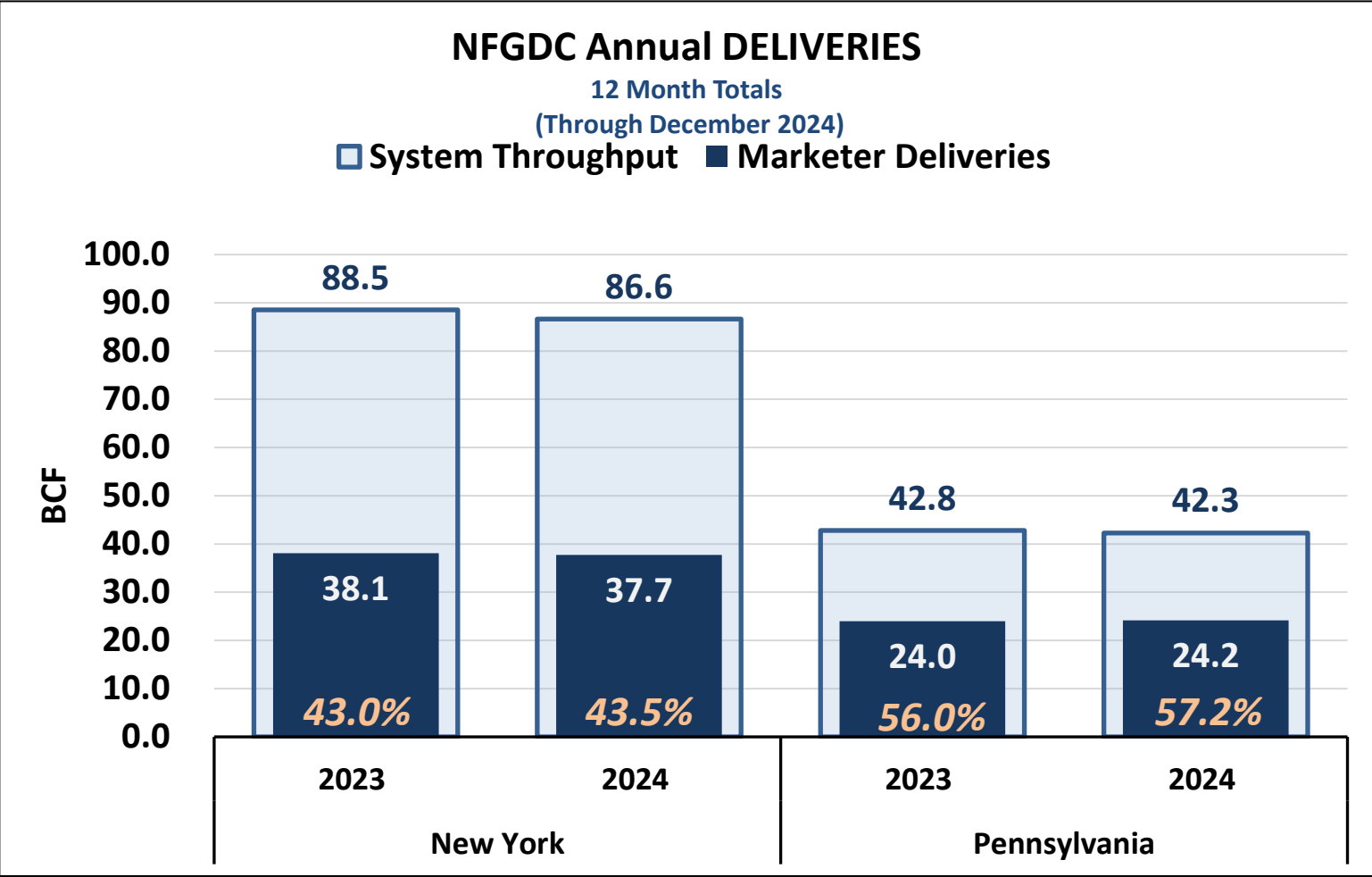
2:00 p.m. EST

AGENDA

Welcome and Introduction	Dan Czechowicz
Regulatory Update	Jeff Same
Capacity Update	Nick Pasquarella
Transportation Update	Chase Bahne & Patrick Dailey
Operational Update	Dan Czechowicz
TSS Rewrite Project	Chase Bahne
General Discussion	All
Closing	Dan Czechowicz

NFGDC Transportation Customers and Annual Throughput

Transportation Customers (as of March 2025)	
New York	
STBA (Aggregation)	34,078
DMT (Aggregation)	42
MMT (Stand Alone)	1
Total New York	34,121
Pennsylvania	
MMNGS (Aggregation)	4,201
SATS (Aggregation)	19,559
DMT (Stand Alone)	77
Total Pennsylvania	23,837
Total NFGDC	57,958



National Fuel Gas Distribution Corporation Spring 2025 Marketer/Supplier Teleconference

Rates & Regulatory Update

**Presentation by: Jeff Same
March 25, 2025**

Rates & Regulatory Update

Federal Update

Pipeline Rate Events

- **Empire Pipeline, Inc.**
 - Settlement reached on pre-filing rate proposal
 - Empire filed Amended Stipulation & Agreement on February 18, 2025
 - Settlement resulted in 1% general rate decrease and 5% rate decrease on Empire North
- **Transcontinental Gas Pipe Line Company, LLC [RP24-1035]**
 - Filed general NGA Section 4 rate case on August 30, 2024
 - Filed a motion to put rates into effect subject to refund effective March 1, 2025
 - Settlement discussions currently in progress
- **Columbia Gas Transmission, LLP [RP24-1103]**
 - Filed general NGA Section 4 rate case on September 30, 2024
 - Rates to go into effect subject to refund on April 1, 2025
 - Settlement discussions currently in progress

Questions ?



National Fuel Gas Distribution Corporation Spring 2025 Marketer/Supplier Teleconference

Capacity Review

**Presentation by: Nick Pasquarella
March 25, 2025**

New York & Pennsylvania Capacity Release

New York

Supplier Transportation Balancing and Aggregation (STBA)

- Mandatory Upstream Transmission Capacity (MUTC)
- Intermediate NFGSC ESS Capacity

Pennsylvania

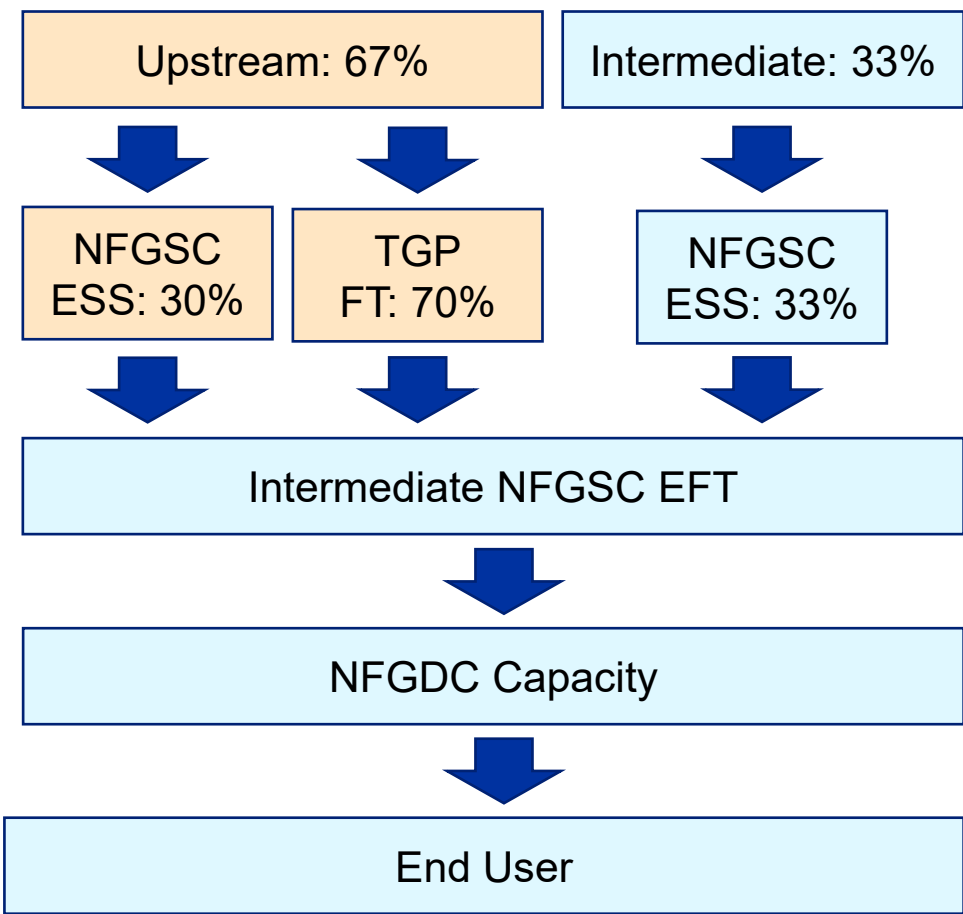
Small Aggregation Transportation Supplier (SATS)

- Released Transmission Capacity (RTC)
- Intermediate NFGSC ESS Capacity

Reminder: Capacity releases are available to execute by the 5th business day prior to each month and must be accepted by the first of month

NY STBA Capacity Release

Serves requirements up to 62 HDD



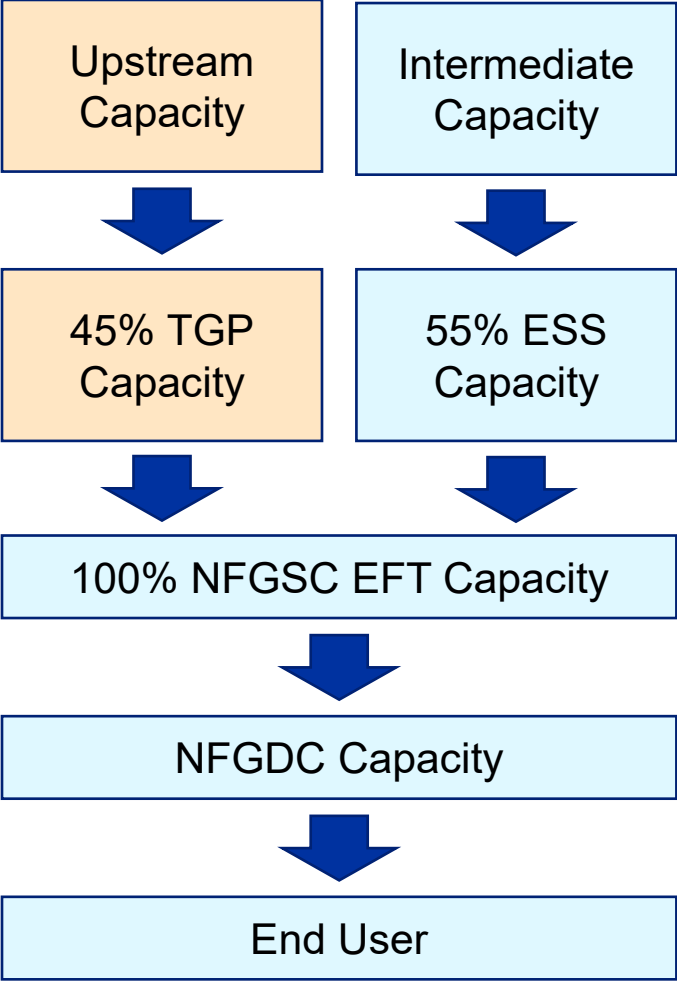
Upstream Release Rates, \$/Dth

April	WACOC Rate \$	NFGSC ESS Max Rate \$	TGP FT Rel. Rate ¹
2020	8.96	4.91	10.69
2021	8.07	5.07	9.35
2022	8.96	5.12	10.61
2023	8.33	5.10	9.72
2024	8.27	5.98	9.25
2025	9.10	5.98	10.44

¹ Derived such that weighted average cost of ESS and TGP equals WACOC

Pennsylvania SATS Capacity Release

Serves requirements up to 62 HDD



Upstream Release Rates, \$/Dth

August	WACOC Rate/TGP FT Release Rate
2020	7.31
2021	8.79
2022	8.17
2023	7.95
2024	7.10
2025 (Est.)	7.03

Questions ?



National Fuel Gas Distribution Corporation Spring 2025 Marketer/Supplier Teleconference

Transportation Services Update

**Presentation by: Chase Bahne & Patrick Dailey
March 25, 2025**

Marketer/Supplier Support

General Information

NFGDC Website: <https://www.nationalfuel.com/business-partners/>

Operating Procedures Manuals:

- GTOP, TSS, TSS Reports, Aggregator, Market Pool, Production Pool

Transportation Scheduling System – TSS

Training

Contact info:

- Chase Bahne, Patrick Dailey, Brandon Jackson, Reve Rofot and Dan Czechowicz
- TSS Help Desk: (716) 857-7232
 - After Hours Support (24/7)
 - Business Hours: 7:30 am – 5:00 pm
 - email: TSSSupport@natfuel.com
- Billing Help Desk: (716) 857-7432
 - Business Hours: 8:00 am – 4:30 pm
 - email: TSD-Billing@natfuel.com

Transportation Scheduling System (TSS)

VMware Horizon Client

- Required by all TSS Users
- Multifactor Authentication / RSA SecurID Token
- Improved access across multiple platforms
- Personalized Security Measures (unique to each user)
- VMware Horizon Client and TSS Passwords must be at least 15 characters and contain 3 out of 4 of the following:
 - 1 upper, 1 lower case letter
 - 1 numeral, 1 special character
- TSS back-up user is highly recommended



Marketer Contact Information

- Update in TSS, under Contact Maintenance (**ECNTM**)
- Important to keep this information current
 - System Alerts / OFOs
 - Scheduling cuts
 - Capacity Release
 - Announcements / Other Information

Marketer Requirements

Daily Delivery Quantities (DDQs)

- Customer usage estimates based on usage history, weather forecasts, and actual measurement including mid course correction
- Meet daily delivery quantity requirements (DDQs) to serve your market
 - Posted in TSS and in the Secure Transactions section of the website
 - Degree Day data is derived from AccuWeather forecasts
 - “Degree Day Information Report” is on the website under General Information files
- Requirements under normal operating conditions:
 - NY STBA and PA MMNGS = 95% - 105%
 - PA SATS = 98% - 102%

Production Daily Quantities (PDQs)

- Estimates of local production based on production volume history

Pool operators are responsible for monitoring DDQs / PDQs and actual volumes

- Request DDQ and PDQ modifiers via TSS
 - Detailed descriptions required when requesting modifiers

Midcourse Corrections

- As adjustments are processed, positive and negative adjustment values are applied to the customer’s DDQ over the remaining days of the month
- Goal is to minimize impacts on imbalances

Marketer Requirements

Minimizing Month End Imbalances

Marketer communication with customers is crucial

- Customer usage changes need to be monitored by the marketer
 - Customers whose usage has daily / monthly variability (i.e. difficult to estimate)
 - Customers whose usage is being estimated for long periods - lack of actual meter reads
 - Provide meter readings to TSS Support

Daily Metered Transportation (DMT) customers

- Match daily deliveries to actual daily usage
- PA DMT statement 'USAGE EST' - marketer / pool operator's responsibility to obtain:
 - 10:00 am read directly from the customer
 - first of the month meter reading for closing out the previous month

Marketer Requirements

End of month storage inventory requirements (minimums, not targets)

		New York (STBA) EOM Minimum %	Pennsylvania (SATS) EOM Minimum %
Injection	April	0%	0%
	May	12%	12%
	June	29%	29%
	July	46%	46%
	August	63%	63%
	September	80%	80%
	October	95%	95%
Withdrawal	November	89%	86%
	December	71%	68%
	January	46%	45%
	February	28%	28%
	March	0%	0%

System Maintenance Orders

MAINTAIN SYSTEM OPERATIONAL INTEGRITY

Communication: email and website postings

1. System Alert

2. Operational Flow Order (OFO)

DDQ Requirements for:

- NY STBA
- PA SATS
- PA MMNGS

Underdelivery OFO

98-105%
100-102%
100-105%

Overdelivery OFO

95-102%
98-100%
95-100%

Normal Operations

95%-105%
98%-102%
95%-105%

DMT Requirements

- NY DMT - Reduce tolerance from 10% to as low as 2%
- PA DMT - Disallow use of banks

Communication: ROBO text message

Marketers must opt-in

- TSS Contact Maintenance Screen

3. Unauthorized Overrun

4. Curtailment

System Maintenance Orders

Operational Flow Order (OFO)

New York Tariff – General Information Section 20.E

“During any period in which the Company determines, in its sole discretion, that its ability to accommodate imbalances is restricted or impaired, or in order to maintain system operational integrity, an Operational Flow Order (“OFO”) shall be issued on a minimum 24 hours notice.”
(Section 0 Leaf 73)

“The Company may issue any other OFOs reasonably required to maintain system operational integrity and to assure continued service to its firm service Customers.” (Section 0 Leaf 74)

Pennsylvania Tariff

MMNGS and SATS

“The Company reserves the right to issue Operational Flow Orders as necessary to preserve the operational integrity of its system.” (Tenth Revised Page No. 118F and Twelfth Revised Page No. 136)

DMT

“OFOs may be issued to customers receiving service under this rate schedule to assure that adequate supplies are delivered to the Company.” (First Revised Page No. 114)

Marketer Responsibility

Cybersecurity Insurance

- Pennsylvania Marketers, Suppliers and Agents
 - Required to have \$2 million of insurance
 - Maintain and provide current certificates of insurance
 - Respond to emails from “natfuel@docutrax.com”

Pipeline Critical Notices

- Regularly review the appropriate pipeline notices
 - Subscribe to receive emails of Critical Notices from each pipeline
 - Review and assess potential impacts
 - Contact the appropriate pipeline for notice clarification
 - Contact NFGDC for assistance

Subscribe for Critical Notice emails:

- NFGSC - contact your internal System Administrator or NFGSC Commercial Services
- TGP - Update DART user setting in “Business Preferences”

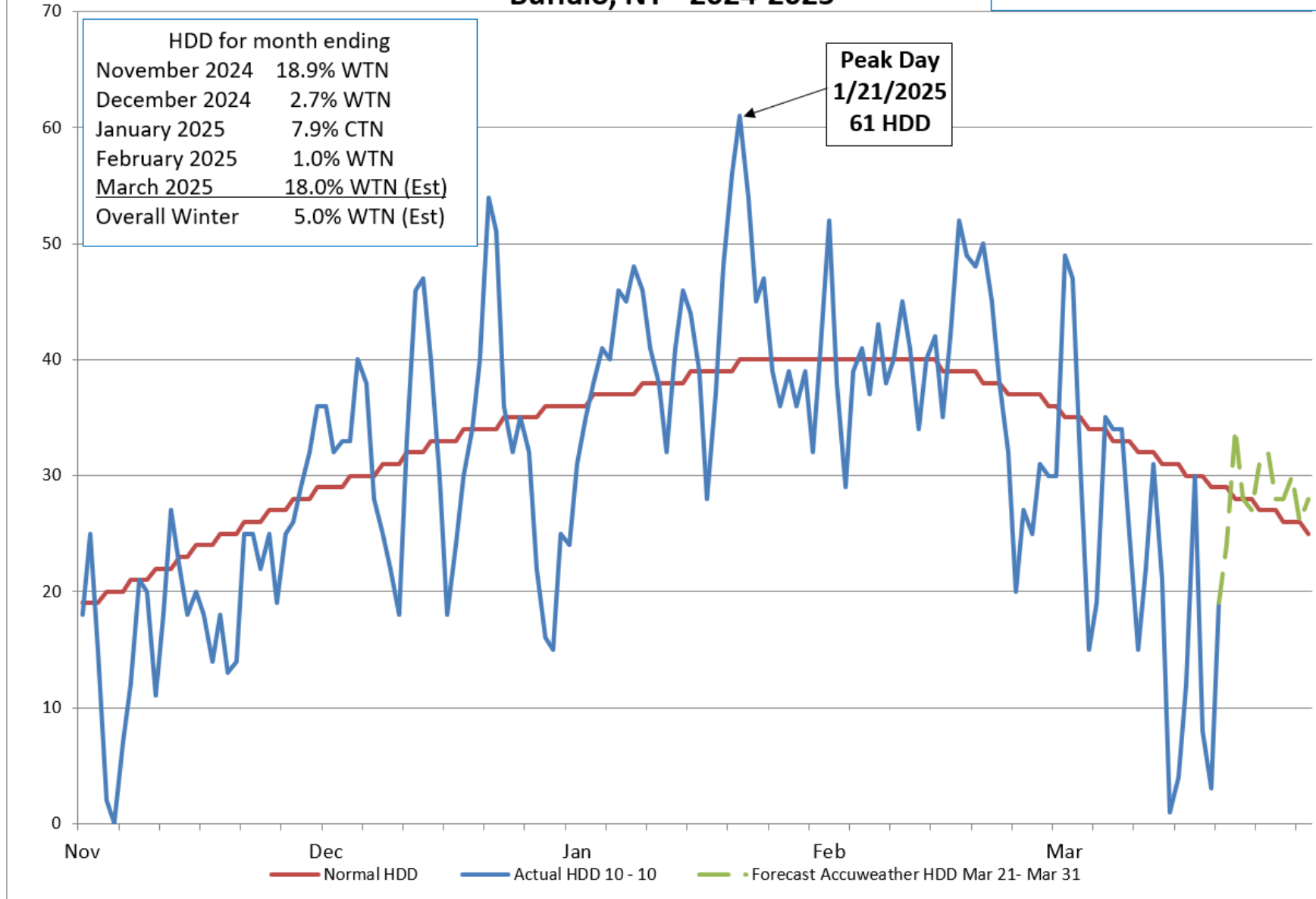
National Fuel Gas Distribution Corporation Spring 2025 Marketer/Supplier Teleconference

Operational Update

**Presentation by: Dan Czechowicz
March 25, 2025**

National Fuel Heating Degree Days (HDD) Buffalo, NY - 2024-2025

Winter HDD through 3-20-25
5.7% WTN



National Fuel Gas Distribution Corporation

Buffalo, New York

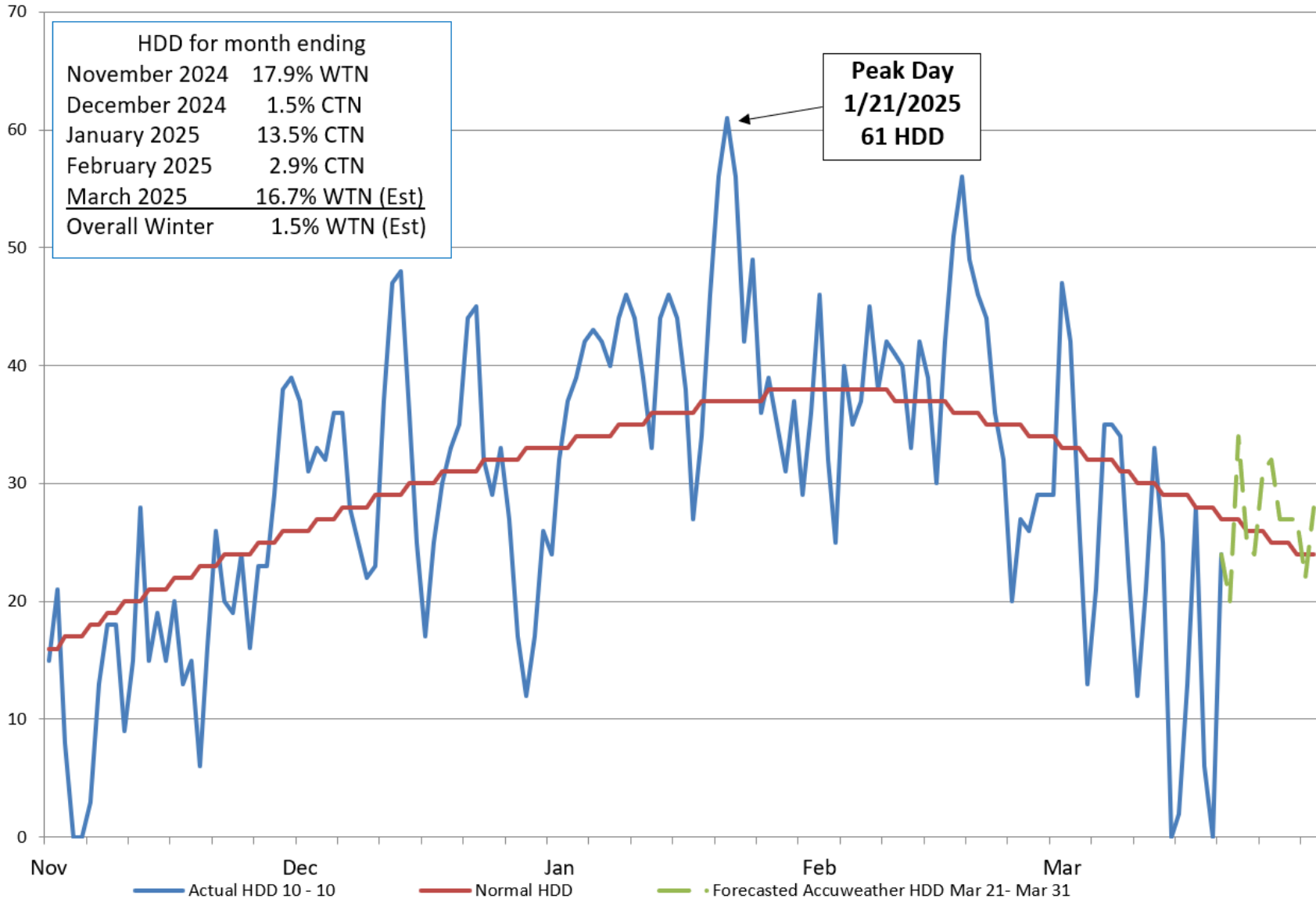
Winter Season			OFO (Under-delivery)		Peak Day		
Colder (CTN) /Warmer (WTN) than Normal			Number issued	Total Days	Dates	Mean Temp (°F)	Throughput (Dth)
2024-2025 (Est)	5.0%	WTN	2	7	1/21/2025	4	748,060
2023-2024	16.4%	WTN	0	0	1/16/2024	13	662,814
2022-2023	11.4%	WTN	1	1	2/3/2023	5	800,794
2021-2022	8.6%	WTN	4	9	1/15/2022	8	734,641
2020-2021	11.9%	WTN	0	0	2/7/2021	15	656,249
2019-2020	10.8%	WTN	0	0	2/14/2020	10	667,433
2018-2019	2.5%	CTN	2	7	1/30/2019	-1	874,658
2017-2018	1.5%	CTN	2	5	1/5/2018	1	845,535
2016-2017	11.8%	WTN	0	0	12/15/2016	14	681,532
2015-2016	17.8%	WTN	0	0	2/13/2016	-2	781,083
2014-2015	13.0%	CTN	1	15	2/23/2015	-2	836,714
2013-2014	13.3%	CTN	3	19	1/28/2014	4	845,309
2012-2013	6.1%	WTN	0	0	1/22/2013	8	743,338
2011-2012	21.6%	WTN	0	0	1/3/2012	11	672,998

NOTE: 2024-2025 is an estimate
Winter 24-25 Temperatures through 3/20/25

NFGDC Spring 2025 Marketer Teleconference

National Fuel Heating Degree Days (HDD) Erie, PA - 2024-2025

Winter HDD through 3-20-25
2.0% WTN



National Fuel Gas Distribution Corporation

Erie, Pennsylvania

Winter Season			OFO (Under-delivery)		Peak Day		
Colder (CTN) /Warmer (WTN) than Normal			Number issued	Total Days	Dates	Mean Temp (°F)	Throughput (Dth)
2024-2025 (Est)	1.5%	WTN	2	7	1/21/2025	4	372,875
2023-2024	15.6%	WTN	0	0	1/16/2024	13	330,297
2022-2023	7.8%	WTN	2	4	12/23/2022	2	378,723
2021-2022	8.7%	WTN	4	9	1/26/2022	12	336,515
2020-2021	11.2%	WTN	0	0	2/7/2021	18	295,510
2019-2020	12.6%	WTN	0	0	2/14/2020	12	313,269
2018-2019	0.1%	WTN	2	7	1/30/2019	-2	426,677
2017-2018	2.0%	CTN	1	3	1/5/2018	7	389,018
2016-2017	13.6%	WTN	0	0	12/15/2016	16	327,562
2015-2016	19.1%	WTN	0	0	2/13/2016	8	336,218
2014-2015	14.7%	CTN	1	15	2/19/2015	-6	394,737
2013-2014	15.6%	CTN	3	19	1/7/2014	1	414,064
2012-2013	3.2%	WTN	0	0	1/22/2013	10	342,059
2011-2012	21.9%	WTN	0	0	1/3/2012	14	290,254

NOTE: 2024-2025 is an estimate
Winter 24-25 Temperatures through 3/20/25

NFGDC Spring 2025 Marketer Teleconference

System Maintenance Orders

Winter 2024 / 2025

(Gas days inclusive, Applies to NY and PA)

November 2024						
Sun	Mon	Tues	Wed	Thurs	Fri	Sat
					1	2 SA No DDQ Avg
3 SA No DDQ Avg	4 SA No DDQ Avg	5	6	7	8	9
10	11	12	13	14	15	16
17	18	19	20	21	22	23
24	25	26	27	28	29	30

December 2024						
Sun	Mon	Tues	Wed	Thurs	Fri	Sat
1	2	3	4	5	6	7
8	9	10	11	12	13	14
15	16	17	18	19	20	21 SA
22 SA	23	24	25	26	27	28
29	30	31				

January 2025						
Sun	Mon	Tues	Wed	Thurs	Fri	Sat
			1	2	3	4
5	6	7 SA	8 SA	9 SA	10 SA	11 SA
12 SA	13 SA	14 SA	15 SA	16 SA	17 SA	18 SA No DDQ Avg
19 OFO No DDQ Avg	20 OFO No DDQ Avg	21 OFO No DDQ Avg	22 OFO	23 SA	24 SA	25
26	27	28	29	30	31	

February 2025						
Sun	Mon	Tues	Wed	Thurs	Fri	Sat
						1
2	3	4	5	6	7	8
9	10	11	12	13	14	15 SA No DDQ Avg
16 SA No DDQ Avg	17 OFO No DDQ Avg	18 OFO No DDQ Avg	19 OFO	20 SA	21 SA	22
23	24	25	26	27	28	

March 2025						
Sun	Mon	Tues	Wed	Thurs	Fri	Sat
						1 SA
2 SA	3	4	5	6	7	8
9	10	11	12	13	14	15 SA No DDQ Avg
16 SA No DDQ Avg	17 SA No DDQ Avg	18	19	20	21	22
23	24	25	26 TBD	27 TBD	28 TBD	29 TBD
30 TBD	31 TBD					

SA - System Alert in Effect

OFO in Effect

National Fuel Gas Distribution Corporation Spring 2025 Marketer/Supplier Teleconference

TSS Rewrite Project

**Presentation by: Chase Bahne
March 25, 2025**

TSS Rewrite Project

TSS (Transportation Scheduling System)

- Upgrade the application
- In development with an anticipated implementation date on June 1, 2025


New Features and Enhancements

- Web Based Access with Multifactor Secure Login
- Ability to Reset Passwords / Unlock Users without calling the TSS Help Desk
- Auto-Renom function




User Setup / Training

- TSS Security Administrator Request Form
- TSS Agent Request Form
- TSS User Manuals will be updated and made available online
- Training Sessions will be held for TSS Users prior to implementation
 - 6 Sessions Beginning in May
 - 2 for Security Administrators only
 - 2 for General TSS Users (Schedulers)
 - 2 for DMT/Production Pool Operators

Preview of TSS Home Screen



SetupNominationsAllocations

c b 

<div>Worklist</div> <div>Open Tasks</div> <div>3</div>	<div>Pool Setup</div> <div>Market Pools</div> <div>Market Pool DDQs</div> <div>Production Pools</div>	<div>Scheduling</div> <div>Nominations</div>
<div>Allocation Statements</div> <div>Gas In Allocations</div> <div>Market Pool Allocations</div> <div>Production Pool Allocations</div>	<div>DMT Statements</div> <div>NY DMT Statements</div> <div>PA DMT Statements</div>	<div>Imbalances</div> <div>Business Party Imbalances</div>

Questions ?

