



**National Fuel<sup>®</sup>**

---

# **National Fuel Gas Distribution Corporation**

Spring 2024 Marketer / Supplier Teleconference

# National Fuel Gas Distribution Corporation

Spring 2024 Marketer/Supplier Teleconference

March 25, 2024

2:00 p.m. EST

## AGENDA

<b>Welcome and Introduction</b>	<b>Dan Czechowicz</b>
<b>Regulatory Update</b>	<b>Jeff Same</b>
<b>Capacity Update</b>	<b>Nick Pasquarella</b>
<b>Transportation Update</b>	<b>Chase Bahne</b>
<b>Operational Update</b>	<b>Dan Czechowicz</b>
<b>TSS Rewrite Project</b>	<b>Dan Czechowicz</b>
<b>General Discussion</b>	<b>All</b>
<b>Closing</b>	<b>Dan Czechowicz</b>

# NFGDC Transportation Customers and Annual Throughput

## Transportation Customers

(as of March 2024)

### New York

STBA (Aggregation)	36,078
DMT (Aggregation)	42
MMT (Stand Alone)	1
<b>Total New York</b>	<b>36,121</b>

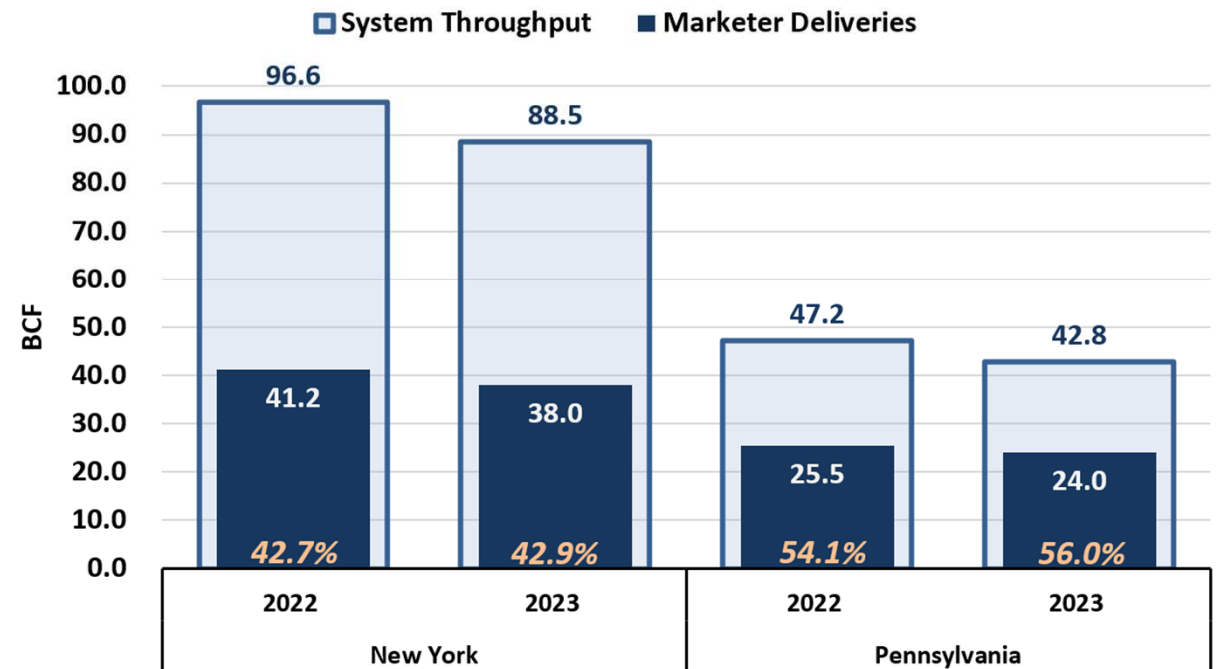
### Pennsylvania

MMNGS (Aggregation)	4,209
SATS (Aggregation)	17,601
DMT (Stand Alone)	78
<b>Total Pennsylvania</b>	<b>21,888</b>

**Total NFGDC 58,009**

## NFGDC Annual DELIVERIES

12 Month Totals  
(Through December 2023)



# **National Fuel Gas Distribution Corporation Spring 2024 Marketer/Supplier Teleconference**

## **Rates & Regulatory Update**

**Presentation by: Jeff Same  
March 25, 2024**

# Rates & Regulatory Update

## Federal Update

### Pipeline Rate Events

#### **National Fuel Gas Supply [RP23-929]**

- Filed general NGA Section 4 rate case on July 31, 2023
- Settlement in principle reached early March 2024
- NFG Supply filed a request to implement settlement rates on an interim basis
- Interim rates went into effect as of February 1, 2024
- Settlement documents currently being drafted

#### **Tennessee Gas Pipeline [RP24-333]**

- Filed request for approval to implement interim rates effective as of January 1, 2024
- Result of a settlement for an overall rate decrease
- Begins with 2% rate decrease in 2024

# Questions ?



# **National Fuel Gas Distribution Corporation Spring 2024 Marketer/Supplier Teleconference**

## **Capacity Review**

**Presentation by: Nick Pasquarella  
March 25, 2024**

# New York & Pennsylvania Capacity Release

## New York

Supplier Transportation Balancing and Aggregation (STBA)

- Mandatory Upstream Transmission Capacity (MUTC)
- Intermediate NFGSC ESS Capacity

## Pennsylvania

Small Aggregation Transportation Supplier (SATS)

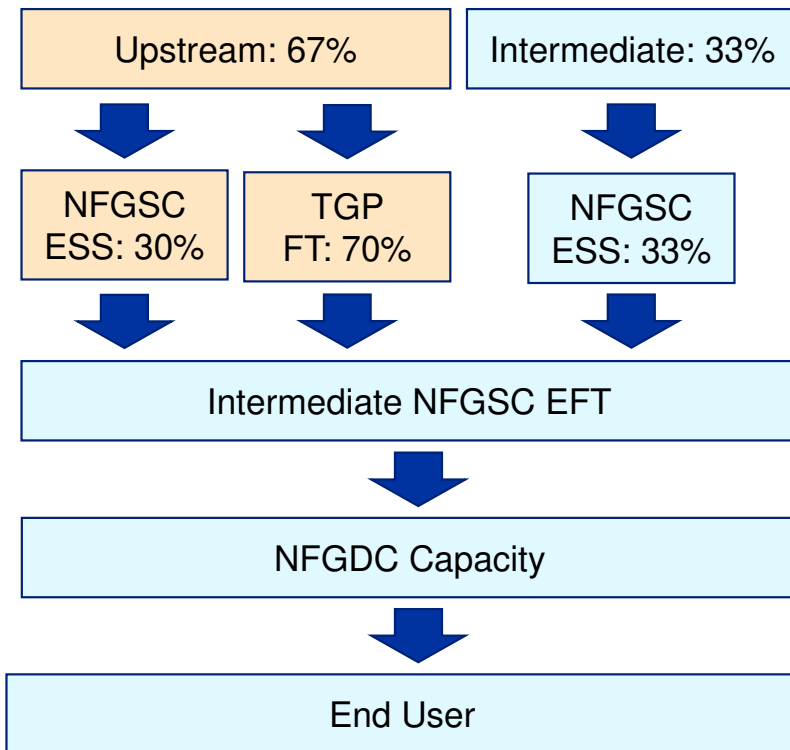
- Released Transmission Capacity (RTC)
- Intermediate NFGSC ESS Capacity

**Reminder: Capacity releases are available to execute by the 5<sup>th</sup> business day prior to each month and must be accepted by the first of month**



# NY STBA Capacity Release

## Serves requirements up to 62 HDD



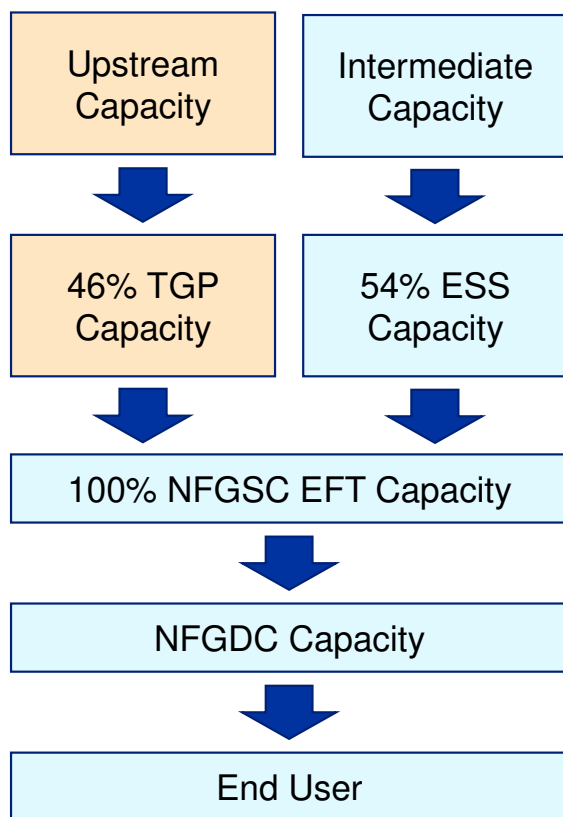
### Upstream Release Rates, \$/Dth

	WACOC Rate	Change from Apr-2012	NFGSC ESS Max Rate	TGP FT Rel. Rate <sup>1</sup>
Apr 2012	\$10.84	-	\$4.16	\$11.92
Apr 2013	\$10.51	-3%	\$4.49	\$11.49
Apr 2014	\$9.81	-9%	\$4.48	\$10.68
Apr 2015	\$9.40	-13%	\$4.48	\$10.27
Apr 2016	\$10.05	-7%	\$4.39	\$11.04
Apr 2017	\$9.49	-12%	\$4.30	\$10.40
Apr 2018	\$8.60	-21%	\$4.48	\$10.37
Apr 2019	\$8.86	-18%	\$4.49	\$10.74
Apr 2020	\$8.96	-17%	\$4.91	\$10.69
Apr 2021	\$8.07	-26%	\$5.07	\$9.35
Apr 2022	\$8.96	-17%	\$5.12	\$10.61
Apr 2023	\$8.33	-23%	\$5.10	\$9.72
Apr 2024	\$8.27	-24%	\$5.98	\$9.25

<sup>1</sup> Derived such that weighted average cost of ESS and TGP equals WACOC

# PA SATS Capacity Release

Serves requirements up to 62 HDD



Upstream Release Rates, \$/Dth

	WACOC	Change from Aug-2012	TGP FT Rel. Rate <sup>1</sup>
Aug 2012	\$14.98	-	\$14.98
Aug 2013	\$13.88	-7%	\$13.88
Aug 2014	\$11.80	-21%	\$11.80
Aug 2015	\$10.14	-32%	\$10.14
Aug 2016	\$9.63	-36%	\$9.63
Aug 2017	\$9.57	-36%	\$9.57
Aug 2018	\$8.94	-40%	\$8.94
Aug 2019	\$7.78	-48%	\$7.78
Aug 2020	\$7.31	-51%	\$7.31
Aug 2021	\$8.79	-41%	\$8.79
Aug 2022	\$8.17	-45%	\$8.17
Aug 2023	\$8.06	-46%	\$8.06
Aug 2024 (Est.)	\$7.11	-53%	\$7.11

<sup>1</sup> TGP FT Release Rate = PA upstream WACOC Rate

# Questions ?



# **National Fuel Gas Distribution Corporation Spring 2024 Marketer/Supplier Teleconference**

## **Transportation Services Update**

**Presentation by: Chase Bahne  
March 25, 2024**

# Marketer/Supplier Support

## General Information

NFGDC Website: <https://www.nationalfuel.com/business-partners/>

Operating Procedures Manuals:

- GTOP, TSS, TSS Reports, Aggregator, Market Pool, Production Pool

Transportation Scheduling System – TSS

Training

Contact info:

- Chase Bahne, Patrick Dailey, Brandon Jackson, Reve Rofot and Dan Czechowicz
- TSS Help Desk: (716) 857-7232
  - After Hours Support (24/7)
  - Business Hours: 7:30 am – 5:00 pm
  - email: [TSSSupport@natfuel.com](mailto:TSSSupport@natfuel.com)
- Billing Help Desk: (716) 857-7432
  - Business Hours: 8:00 am – 4:30 pm
  - email: [TSD-Billing@natfuel.com](mailto:TSD-Billing@natfuel.com)

# Transportation Scheduling System (TSS)

## VMware Horizon Client

- Required by all TSS Users
- Multifactor Authentication / RSA SecurID Token
- Improved access across multiple platforms
- Personalized Security Measures (unique to each user)
- VMware Horizon Client and TSS Passwords must be at least 15 characters and contain 3 out of 4 of the following:
  - 1 upper, 1 lower case letter
  - 1 numeral, 1 special character
- TSS back-up user is highly recommended



## Marketer Contact Information

- Update in TSS, under Contact Maintenance (**ECNTM**)
- Important to keep this information current
  - System Alerts / OFOs
  - Scheduling cuts
  - Capacity Release
  - Announcements / Other Information

# Marketer Requirements

## Daily Delivery Quantities (DDQs)

- Customer usage estimates based on usage history, weather forecasts, and actual measurement including mid course correction
- Meet daily delivery quantity requirements (DDQs) to serve your market
  - Posted in TSS and in the Secure Transactions section of the website
  - Degree Day data is derived from AccuWeather forecasts
  - “Degree Day Information Report” is on the website under General Information files
- Requirements under normal operating conditions:
  - NY STBA and PA MMNGS = 95% - 105%
  - PA SATS = 98% - 102%

## Production Daily Quantities (PDQs)

- Estimates of local production based on production volume history

## Pool operators are responsible for monitoring DDQs / PDQs and actual volumes

- Request DDQ and PDQ modifiers via TSS
  - Detailed descriptions required when requesting modifiers

# DDQ Calculations

## **The DDQ algorithm selection process works through a set hierarchy**

1. First, the program looks for telemetered reads (Algorithm 4)
2. If there are none, it looks for base load and degree-day factors (Algorithm 1)
  - $(\text{Degree Days} \times \text{Degree Day Factor}) + \text{Baseload}$
3. If there are none, the same month last year is used (Algorithm 3)
4. If the same month last year is not available, two months ago is used (Algorithm 2)
5. If none of the prior data is available, the default class consumption is used (Algorithm 0)
6. Accounts can have several of these designations (Algorithm 5)

These can be found in the TSS Market Pool Manual located:

<https://www.nationalfuel.com/wp-content/uploads/2020/10/TSSMktPoolManual.pdf>

## **Customer algorithms can be located on the National Fuel website on the following reports**

- 6-Day Daily DDQ Basis Report
- Daily DDQ Midcourse Report
- Monthly DDQ Basis Report



# Marketer Requirements

## Minimizing Month End Imbalances

### Marketer communication with customers is crucial

- Customer usage changes need to be monitored by the marketer
  - Customers whose usage has daily / monthly variability (i.e. difficult to estimate)
  - Customers whose usage is being estimated for long periods - lack of actual meter reads
  - Provide meter readings to TSS Support

### Daily Metered Transportation (DMT) customers

- Match daily deliveries to actual daily usage
- PA DMT statement 'USAGE EST' - marketer / pool operator's responsibility to obtain:
  - 10:00 am read directly from the customer
  - first of the month meter reading for closing out the previous month

### Telemetered Adjustments

- Adjusted volumes are calculated by National Fuel with customer assistance
- Volume is communicated to marketers
- DDQ modifiers can be made in current month to provide marketers opportunity to limit impact to imbalance

# Marketer Requirements

## End of month storage inventory requirements (minimums, not targets)

		New York (STBA) EOM Minimum %	Pennsylvania (SATS) EOM Minimum %
<b>Injection</b>	April	0%	0%
	May	12%	12%
	June	29%	29%
	July	46%	46%
	August	63%	63%
	September	80%	80%
	October	95%	95%
<b>Withdrawal</b>	November	89%	86%
	December	71%	68%
	January	46%	45%
	February	28%	28%
	March	0%	0%

# System Maintenance Orders

## MAINTAIN SYSTEM OPERATIONAL INTEGRITY

Communication: email and website postings

### System Alert

### Operational Flow Order (OFO)

#### DDQ Requirements

- NY STBA 98-105% (cold); 95-102% (warm); 95%-105% (normal)
- PA SATS 100-102% (cold); 98-100% (warm); 98%-102% (normal)
- PA MMNGS 100-105% (cold); 95-100% (warm); 95%-105% (normal)

#### DMT Requirements

- NY DMT - Option to shrink tolerance from 10% to as low as 2%
- PA DMT - Option to disallow use of banks

#### Communication: ROBO text

#### Marketers must opt-in

- TSS Contact Maintenance Screen



### Unauthorized Overrun

### Curtailment



# Marketer Responsibility

## Cybersecurity Insurance

- Pennsylvania Marketers, Suppliers and Agents
  - Required to have \$2 million of insurance
  - Maintain and provide current certificates of insurance
    - Respond to emails from “natfuel@docutrax.com”

## Pipeline Critical Notices

- Regularly review the appropriate pipeline notices
  - Subscribe to receive emails of Critical Notices from each pipeline
    - Review and assess potential impacts
    - Contact the appropriate pipeline for notice clarification
    - Contact NFGDC for assistance

## Subscribe for Critical Notice emails:

- NFGSC - contact your internal System Administrator or NFGSC Commercial Services
- TGP - Update DART user setting in “Business Preferences”

# **National Fuel Gas Distribution Corporation Spring 2024 Marketer/Supplier Teleconference**

## **Operational Update**

**Presentation by: Dan Czechowicz  
March 25, 2024**

# System Maintenance Orders

Winter 2023 / 2024

(Gas days inclusive, Applies to NY and PA)

November 2023						
Sun	Mon	Tues	Wed	Thurs	Fri	Sat
			1	2	3	4
5	6	7	8	9	10	11
12	13	14	15	16	17	18
19	20	21	22	23	24	25
26	27	28	29	30		

December 2023						
Sun	Mon	Tues	Wed	Thurs	Fri	Sat
					1	2
3	4	5	6	7	8	9 SA
						No DDQ Avg
10 SA	11 SA	12	13	14	15	16
No DDQ Avg	No DDQ Avg					
17	18	19	20	21	22	23
24	25	26	27	28	29	30
31						

January 2024						
Sun	Mon	Tues	Wed	Thurs	Fri	Sat
	1	2	3	4	5	6
7	8	9	10	11	12	13 SA
						No DDQ Avg
14 SA	15 SA	16 SA	17 SA	18 SA	19 SA	20 SA
No DDQ Avg	No DDQ Avg	No DDQ Avg				No DDQ Avg
21 SA	22 SA	23	24	25	26	27
No DDQ Avg	No DDQ Avg					
28	29	30	31			

February 2024						
Sun	Mon	Tues	Wed	Thurs	Fri	Sat
				1	2	3
4	5	6	7	8	9	10
11	12	13	14	15	16	17
18	19	20	21	22	23	24
25	26	27	28	29		

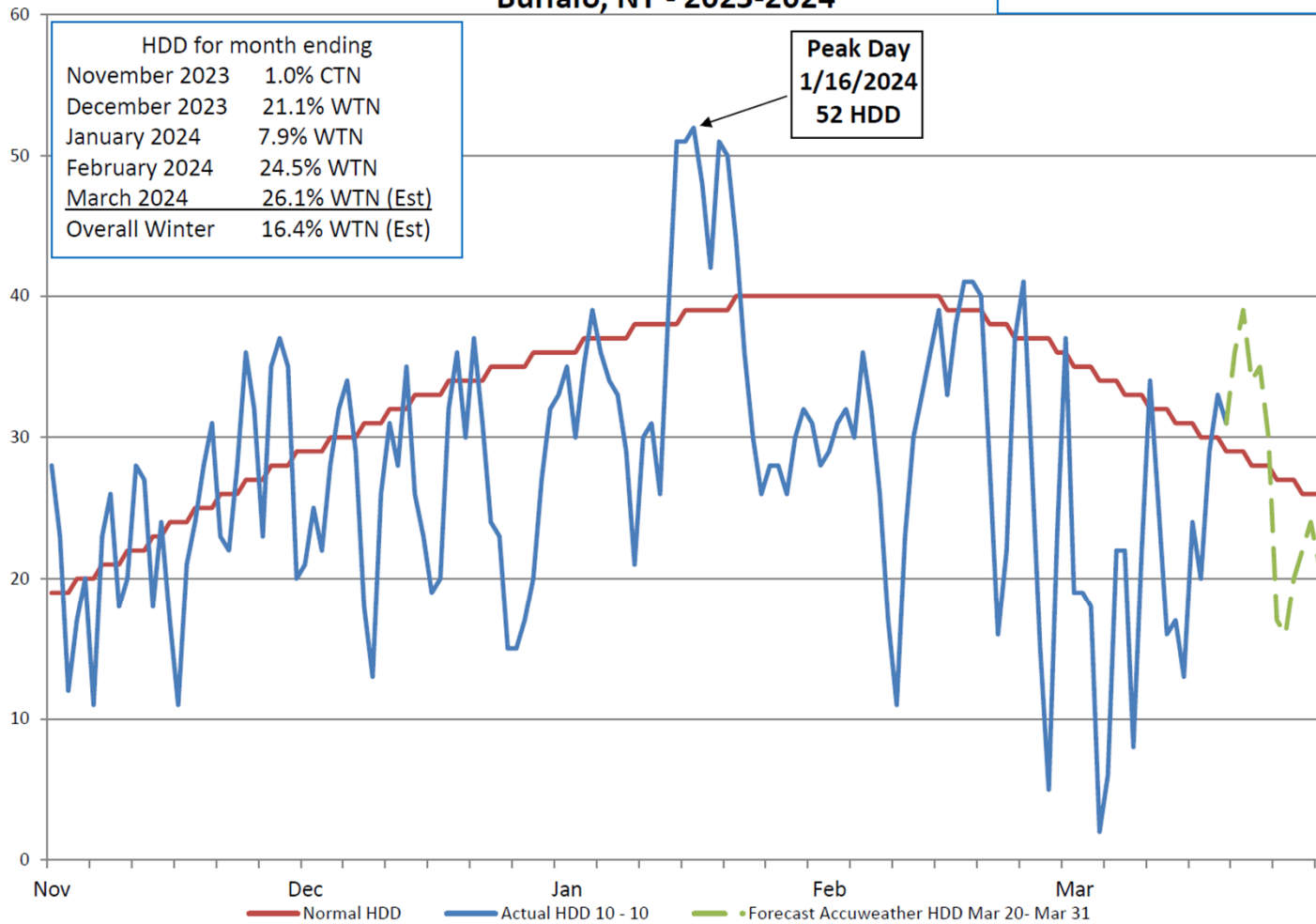
SA - System Alert in Effect

OFO in Effect

- **March 2024** - No System Maintenance Orders to date

## National Fuel Heating Degree Days (HDD) Buffalo, NY - 2023-2024

Winter HDD through 3-19-24  
23.2% WTN



# National Fuel Gas Distribution Corporation Buffalo, New York

Winter Season			OFO (Under-delivery)		Peak Day		
Colder (CTN) /Warmer (WTN) than Normal			Number issued	Total Days	Dates	Mean Temp (°F)	Throughput (Dth)
<b>2023-2024 (Est)</b>	<b>16.4%</b>	<b>WTN</b>	<b>0</b>	<b>0</b>	<b>1/16/2024</b>	<b>13</b>	<b>662,814</b>
2022-2023	11.4%	WTN	1	1	2/3/2023	5	800,794
2021-2022	8.6%	WTN	4	9	1/15/2022	8	734,641
2020-2021	11.9%	WTN	0	0	2/7/2021	15	656,249
2019-2020	10.8%	WTN	0	0	2/14/2020	10	667,433
2018-2019	2.5%	CTN	2	7	1/30/2019	-1	874,658
2017-2018	1.5%	CTN	2	5	1/5/2018	1	845,535
2016-2017	11.8%	WTN	0	0	12/15/2016	14	681,532
2015-2016	17.8%	WTN	0	0	2/13/2016	-2	781,083
2014-2015	13.0%	CTN	1	15	2/23/2015	-2	836,714
2013-2014	13.3%	CTN	3	19	1/28/2014	4	845,309
2012-2013	6.1%	WTN	0	0	1/22/2013	8	743,338
2011-2012	21.6%	WTN	0	0	1/3/2012	11	672,998
2010-2011	5.7%	CTN	1	4	1/23/2011	-1	735,214
2009-2010	2.3%	WTN	0	0	1/30/2010	7	648,907

NOTE: 2023-2024 is an estimate  
Winter 23-24 Temperatures through 3/19/24

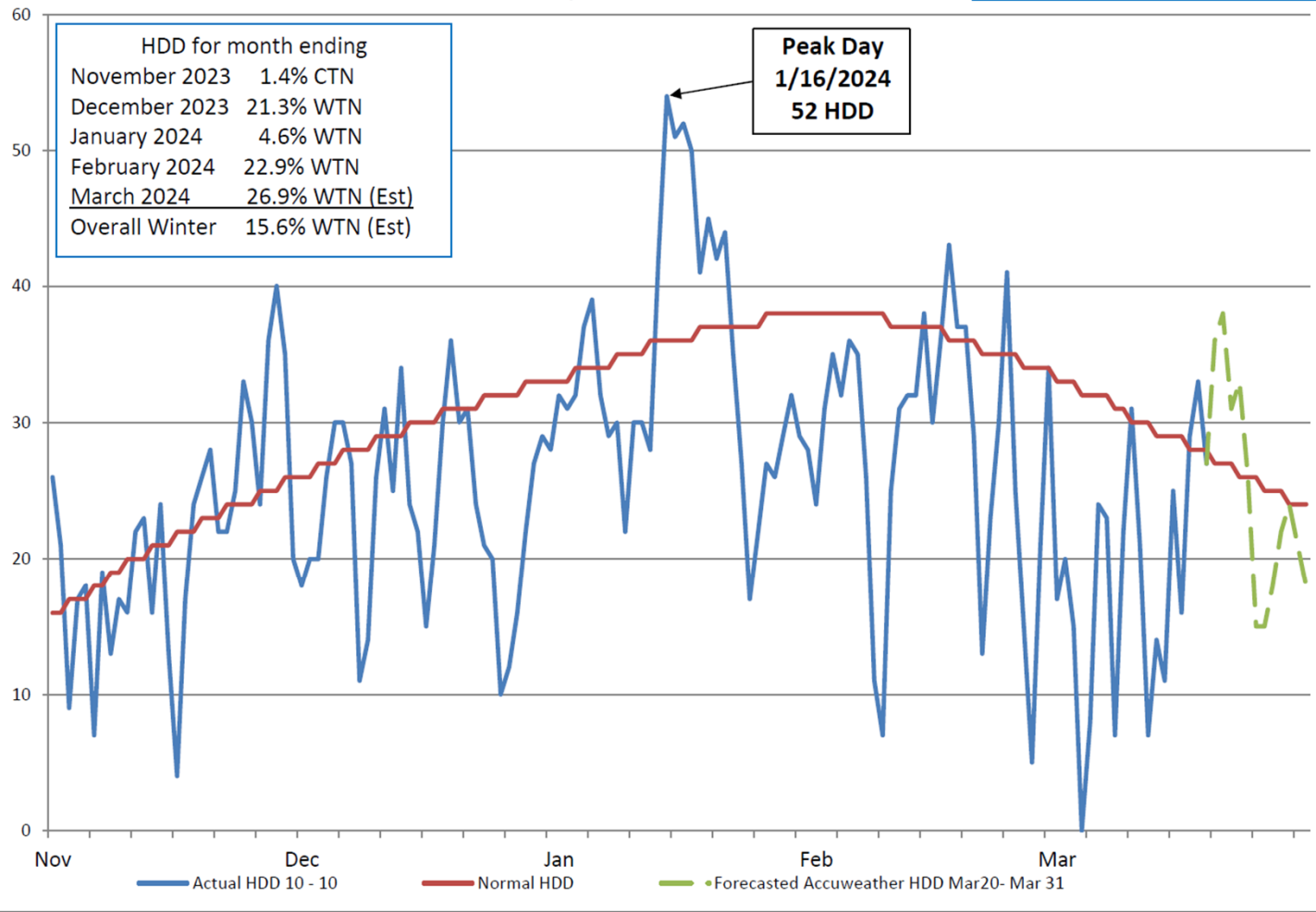
NFGDC Spring 2024 Marketer Teleconference





## National Fuel Heating Degree Days (HDD) Erie, PA - 2023-2024

Winter HDD through 3-19-23  
21.7% WTN



# National Fuel Gas Distribution Corporation

## Erie, Pennsylvania

Winter Season			OFO (Under-delivery)		Peak Day		
Colder (CTN) /Warmer (WTN) than Normal			Number issued	Total Days	Dates	Mean Temp (°F)	Throughput (Dth)
<b>2023-2024 (Est)</b>	<b>15.6%</b>	<b>WTN</b>	<b>0</b>	<b>0</b>	<b>1/16/2024</b>	<b>13</b>	<b>330,297</b>
2022-2023	7.8%	WTN	2	4	12/23/2022	2	378,723
2021-2022	8.7%	WTN	4	9	1/26/2022	12	336,515
2020-2021	11.2%	WTN	0	0	2/7/2021	18	295,510
2019-2020	12.6%	WTN	0	0	2/14/2020	12	313,269
2018-2019	0.1%	WTN	2	7	1/30/2019	-2	426,677
2017-2018	2.0%	CTN	1	3	1/5/2018	7	389,018
2016-2017	13.6%	WTN	0	0	12/15/2016	16	327,562
2015-2016	19.1%	WTN	0	0	2/13/2016	8	336,218
2014-2015	14.7%	CTN	1	15	2/19/2015	-6	394,737
2013-2014	15.6%	CTN	3	19	1/7/2014	1	414,064
2012-2013	3.2%	WTN	0	0	1/22/2013	10	342,059
2011-2012	21.9%	WTN	0	0	1/3/2012	14	290,254
2010-2011	7.1%	CTN	1	4	1/23/2011	2	315,776
2009-2010	0.1%	WTN	0	0	1/28/2010	16	295,043

NOTE: 2023-2024 is an estimate  
 Winter 23-24 Temperatures through 3/19/24

NFGDC Spring 2024 Marketer Teleconference



# **National Fuel Gas Distribution Corporation Spring 2024 Marketer/Supplier Teleconference**

## **TSS Rewrite Project**

**Presentation by: Dan Czechowicz  
March 25, 2024**

# TSS Rewrite Project

## TSS (Transportation Scheduling System)

- Upgrade the application
- In development with an anticipated completion date in 2025

## New Features and Enhancements

- Web Based Access with Multifactor Secure Login
- Ability to Reset Passwords / Unlock Users without calling the TSS Help Desk
- Search and filter information based on user needs
- Point and Click interface to select information
- System generated monthly pool setup
- Auto-Renom function

## Training

- Sessions will be held for TSS Users prior to implementation
- TSS User Manuals will be updated and made available online

# Questions ?

