

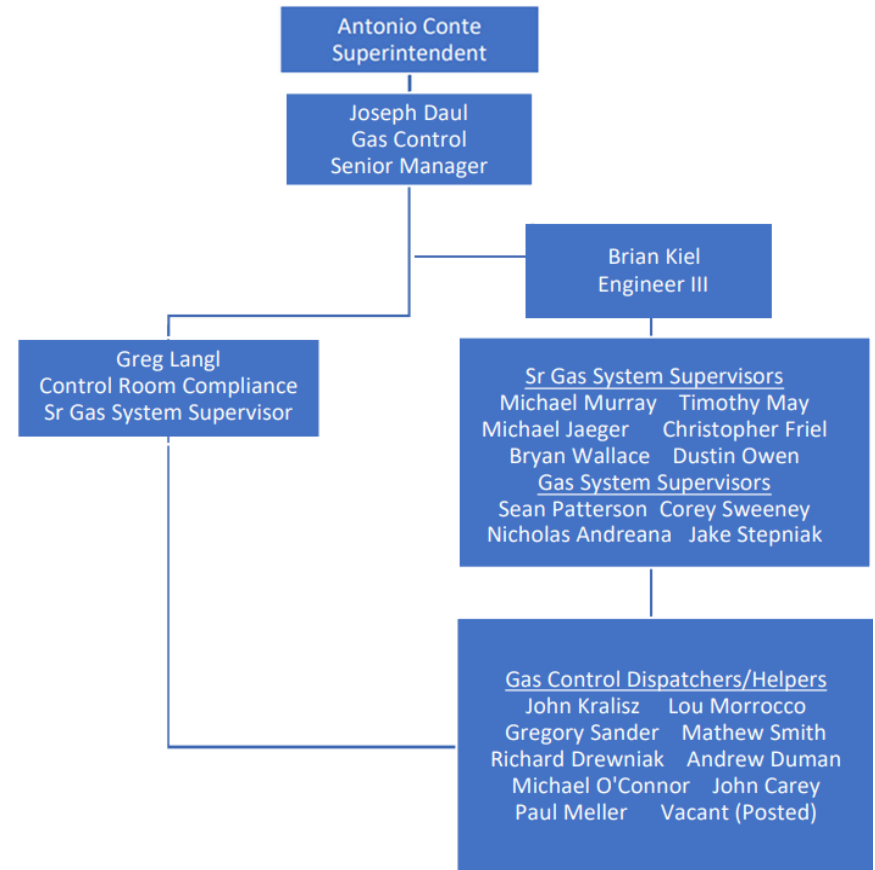


National Fuel Gas Supply

Spring 2024 NGA
Presentation

Gas Control Overview & Personnel

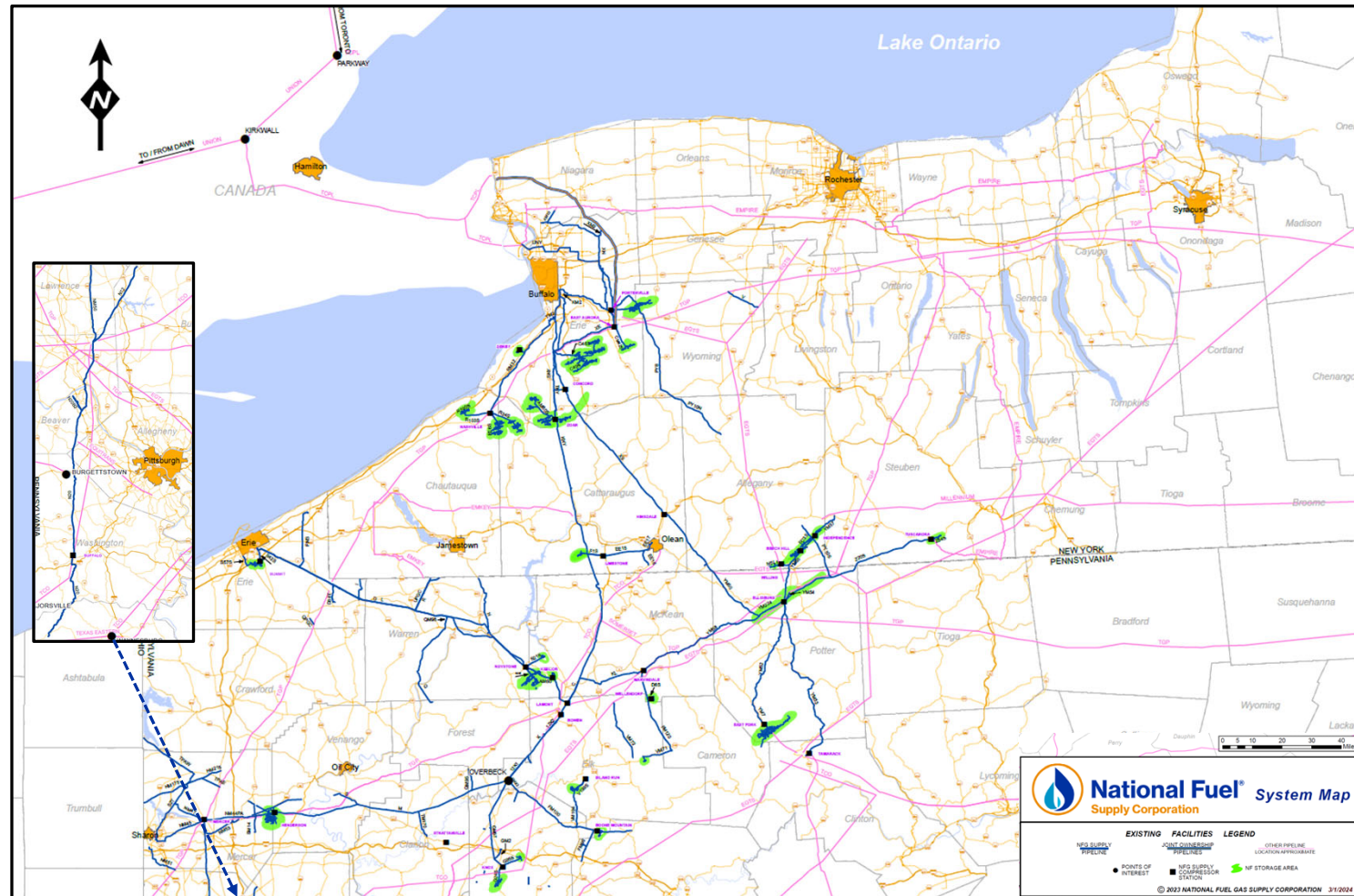
- Primary control room in Buffalo, NY
- GCOC operates National Fuel Supply, Empire, National Fuel Midstream, and National Fuel Distribution (NY & PA) assets
- 10 System Supervisors
- 10 Gas Dispatchers



System Overview - National Fuel Gas Supply Company (NFGSC)

NFGSC Operates:

- Over 1,600 miles of transmission pipeline in Western NY & PA
- 28 active storage facilities
- 26 compressor stations



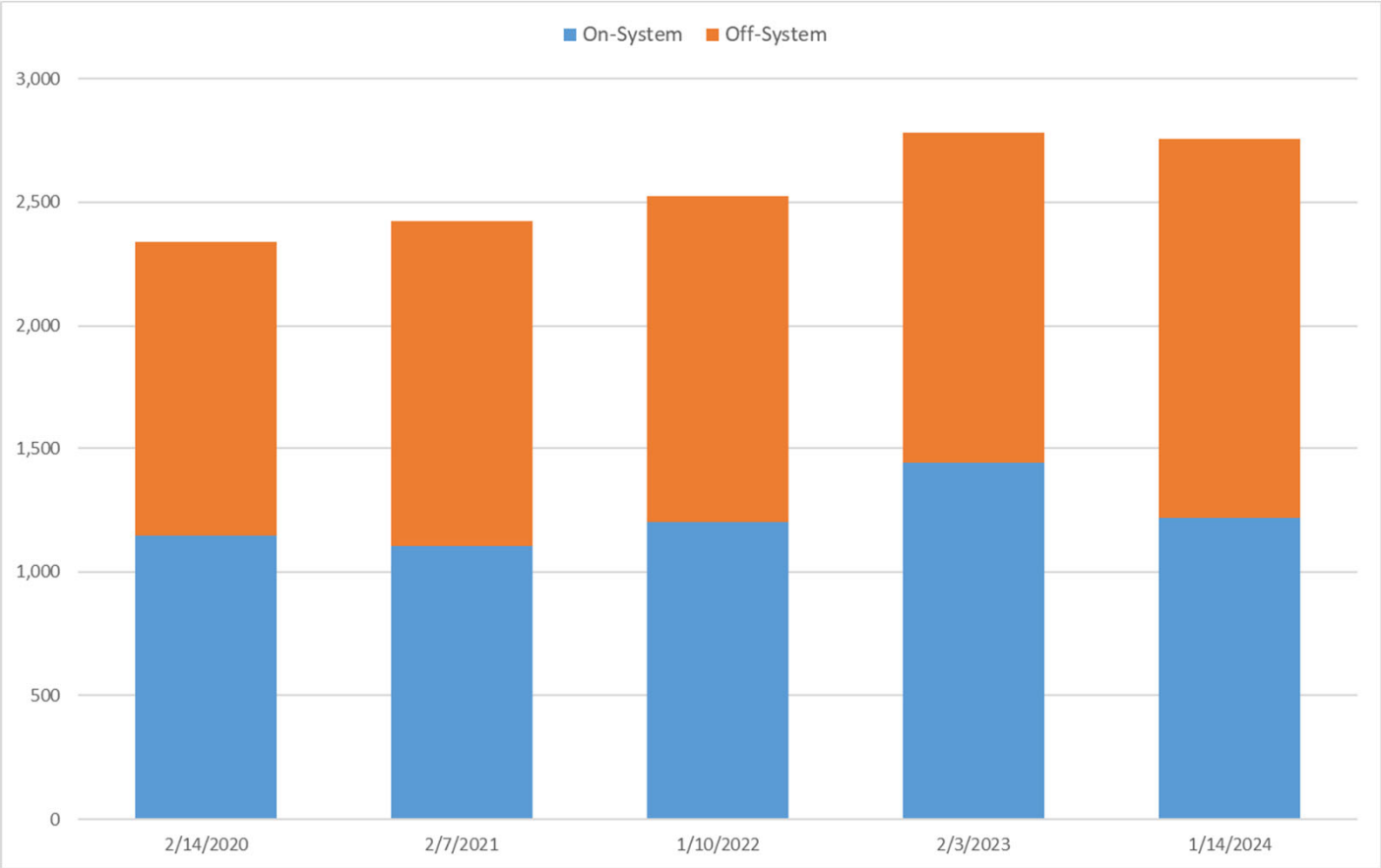
NFGSC System Overview

Weather & Throughput Statistics:
Winter Operations(11/1/23 to 3/31/24)

Peak Day Throughput (1/14/2024)	2,980 MMCF
Peak Day Degree Day (1/14/2024)	53 HDD
Average Degree Day 2023/2024	27 HDD
Average Degree Day 2022/2023	29 HDD
Total Winter Throughput (Nov-Mar*)	280 BCF

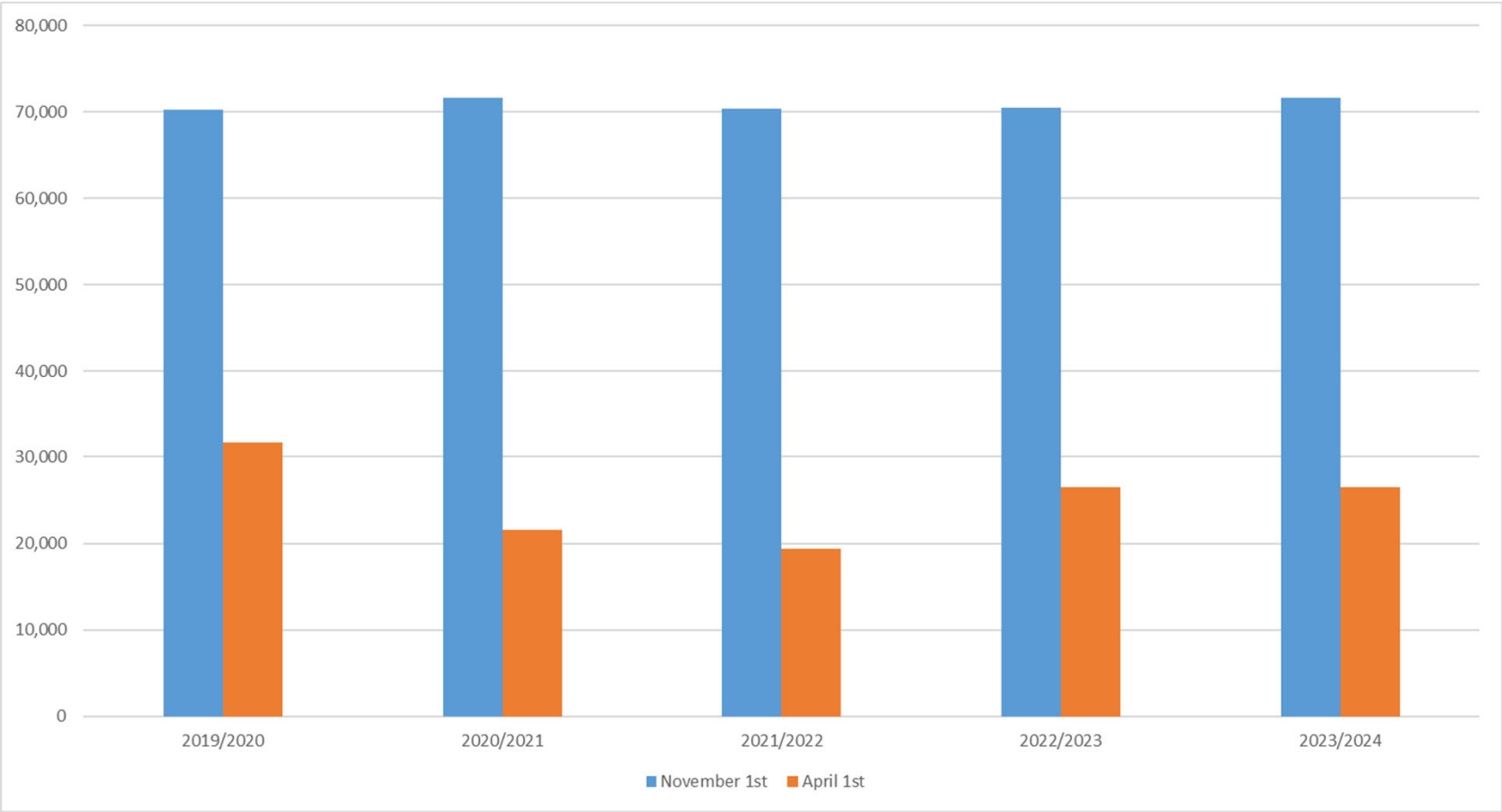
**March data not yet finalized*

NFGSC Peak Day Deliveries (MDth)

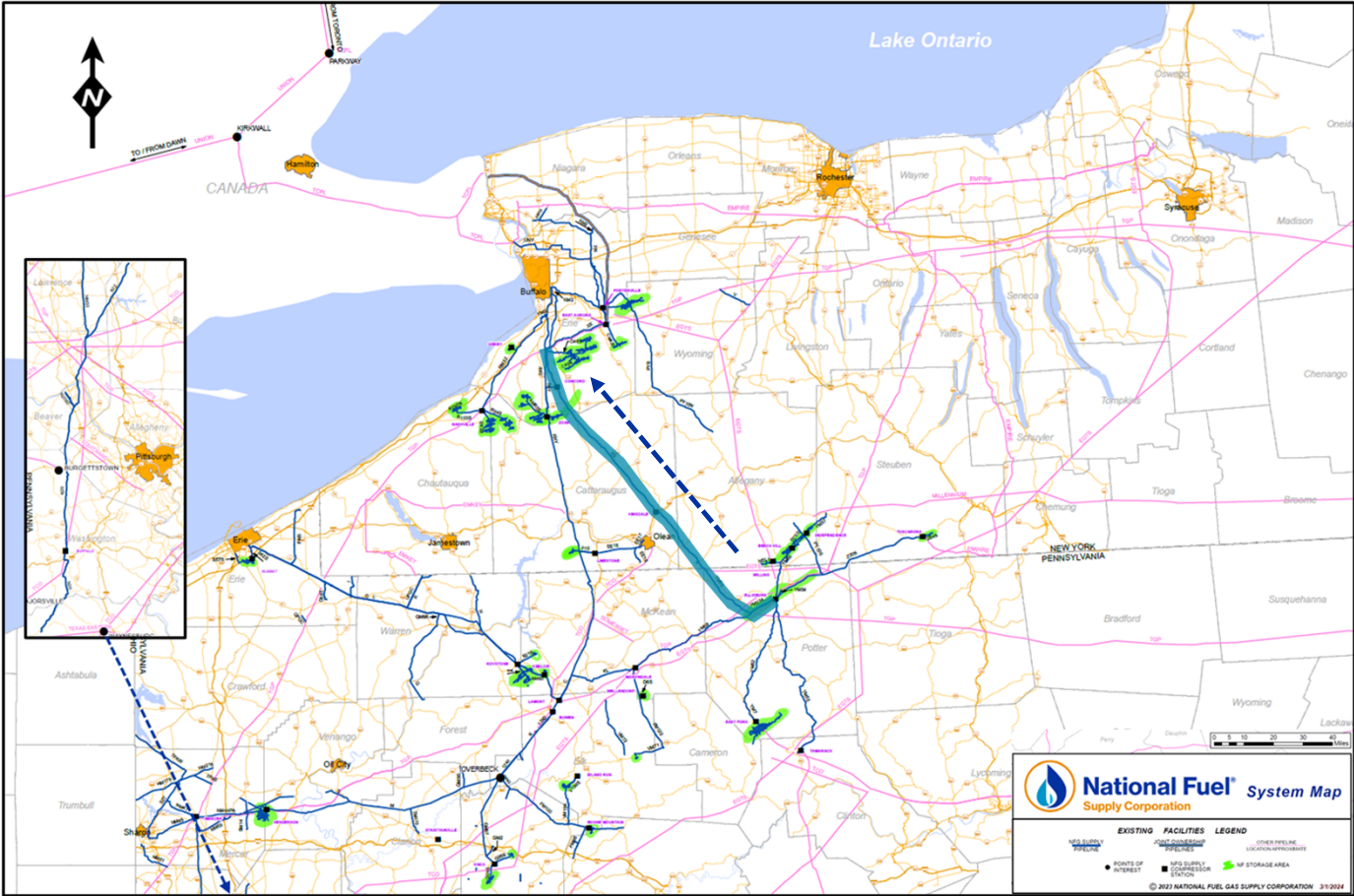


**1/14/2024 based on preliminary data*

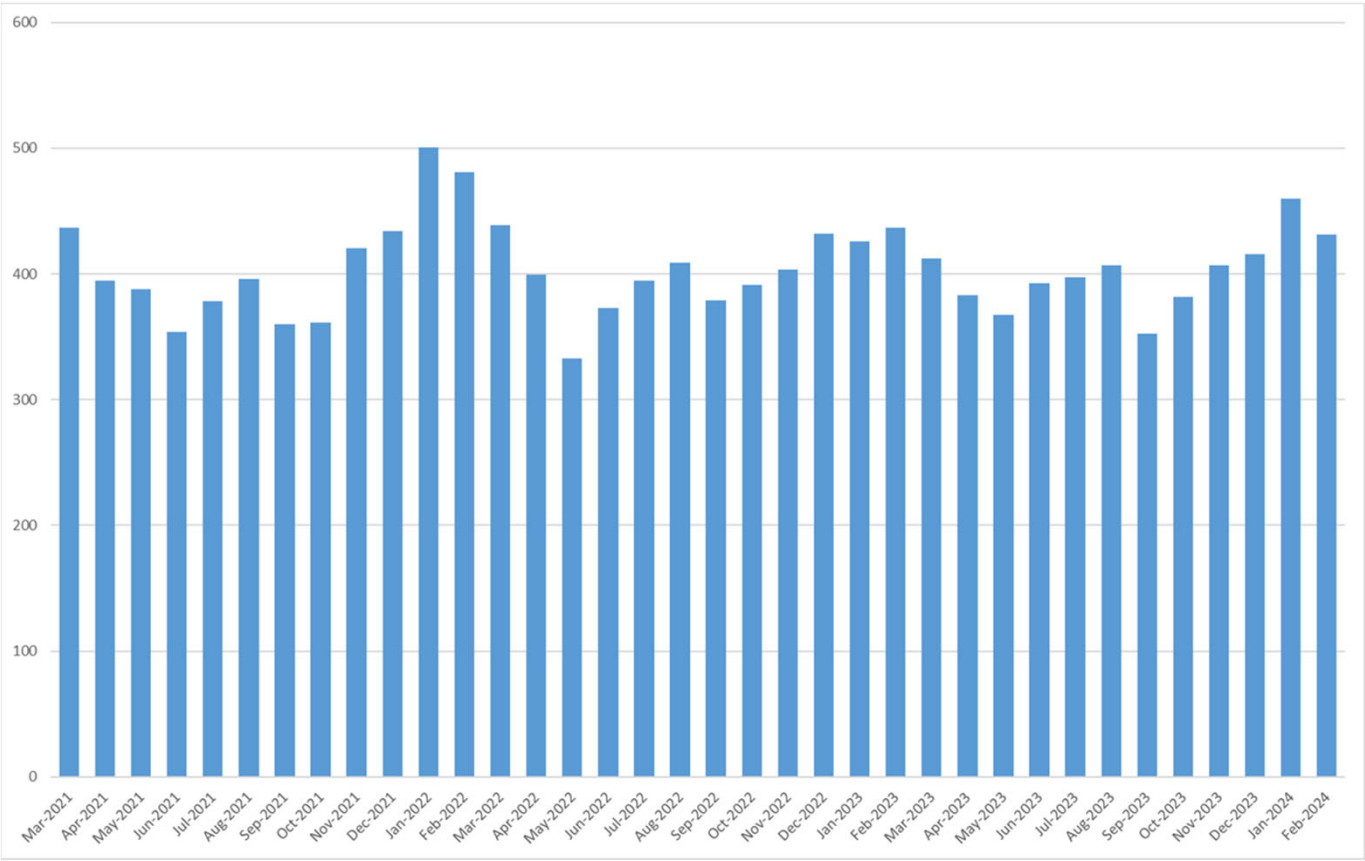
NFGSC Top Gas Storage Inventory (MMCF)



NFGSC Line X South to North



NFGSC Line X South to North



Average Daily Scheduled by Month (MDth)

2024 Construction and Maintenance

Construction and Maintenance Schedule



2024 Construction & Maintenance Schedule

Updated: 2/28/2024

Project	Description	Project Start Date	Project End Date	Estimated Outage Duration (Days)	Location	Impact	Expected Service Level Impact
Hinsdale - VGR & DGS Systems Install	Station Upgrades	June 2024	June 2024	3	Hinsdale Compressor Station	Concord S to N Capacity reduced to 0. Lease K12092 capacity reduced to 0. Outage will partially overlap with "XE Exposure - Replacement" and "XS Segment Replacements".	Firm
XE Exposure - Replacement	Pipeline Replacements	June 2024	June 2024	8	Line XE	Concord S to N Capacity reduced to 0. Outage will partially overlap with "XS Segment Replacements" and "Hinsdale VGR & DGS Systems Install".	Firm
XS Segment Replacements	Pipeline Replacements	June 2024	June 2024	4	Line XS	Concord S to N Capacity reduced to 0. Lease K12092 capacity reduced to 0. Outage will partially overlap with "XE Exposure - Replacement" and "Hinsdale VGR & DGS Systems Install".	Firm
N20/NM50 ILI	Inline Inspection	June 2024	June 2024	5	Line N	Line N S to N capacity will be reduced. Operating capacity of delivery and receipt points within ILI path will be reduced	Firm
YM53 ILI	Inline Inspection	June 2024	July 2024	5	Line YM-53	YM-53 S to N and YM-53 North to South capacities will be limited to achieve required pigging volumes	Firm
Marvindale ERU Install	Emissions Reduction	TBD	TBD	2	Marvindale Compressor Station	Receipts at NFG Midstream Clermont, LLC (PSP3104622) will be reduced	Firm
East Aurora Combustion Emissions Reductions-Engine Replacement	Station Upgrades	3/4/2024	3/29/2024	26	East Aurora Compressor Station	Unit 2 out of service. Deliveries to TGP - East Aurora (420077) will be limited to primary only. See Critical Notice 1048663.	Non-Firm
Limestone Piggability Project	Pipeline Upgrades	April 2024	May 2024	5	Limestone Storage	High pressure gas from Limestone storage will be unavailable	Non-Firm
Limestone Storage - Spring Rock Testing	Rock Testing	4/9/2024	4/18/2024	10	Limestone Storage	High pressure gas from Limestone storage will be unavailable	Non-Firm
Hartzfelt Mountain Station Modernization	Station Upgrades	Spring 2024	Summer 2024	TBD	Hartzfelt Mountain Station	Receipts at Hartzfelt (633863) will be unavailable. Outage will overlap with "EE16 - Valve Replacement".	Non-Firm
EE16 - Valve Removal	Pipeline Upgrades	June 2024	June 2024	2	Line EE16	Receipts at Hartzfelt (633863) will be unavailable. Outage will overlap with "Hartzfelt Mountain Station Modernization".	Non-Firm
Limestone Storage - Fall Rock Testing	Rock Testing	November 2024	November 2024	10	Limestone Storage	High pressure gas from Limestone storage will be unavailable	Non-Firm
FM100 Back Pressure Regulator	Pipeline Upgrades	May 2024	May 2024	2	FM100	FM100 area producers may experience high pressure and reduced delivery capability	Local Production Only

Construction and Maintenance Schedule



2024 Construction & Maintenance Schedule

Updated: 2/28/2024

Project	Description	Project Start Date	Project End Date	Estimated Outage Duration (Days)	Location	Impact	Expected Service Level Impact
YM53 Pig Launcher Modifications	Pipeline Upgrades	April 2024	April 2024	3	Leidy Station	None	None
Ellisburg Hilltop VGR	Station Upgrades	May 2024	May 2024	2	Ellisburg Compressor Station	Units 14 & 15 out of service	None
KPA ILI Lewis Run to Maloney Farm	Inline Inspection	May 2024	May 2024	5	Line KPA	None	None
Line D Hydrotest	Integrity Assessment	Spring 2024	Spring 2024	5	Line D	None	None
Line UNY Schwartz Rd	Pipeline Replacements	Spring 2024	Summer 2024	120	Line U	None	None
Mayville Station	Station Upgrades	Spring 2024	Summer 2024	5	Mayville Station	Physical receipts at Mayville (420088) will be unavailable	None
C46S OPP Installation & Transducer Improvements	Pipeline Upgrades	June 2024	June 2024	3	Colden Storage	No physical injection or withdrawal from Colden storage field	None
C45S	Pipeline Replacements	Summer 2024	Summer 2024	60	Colden Storage	None	None
Line N12 Drip Removal and Robotic ILI	Inline Inspection	Summer 2024	Summer 2024	5	Line N12	None	None
Ellisburg Upper/Lower VGR	Station Upgrades	October 2024	October 2024	4	Ellisburg Compressor Station	Units 1A-12 out of service at various times	None