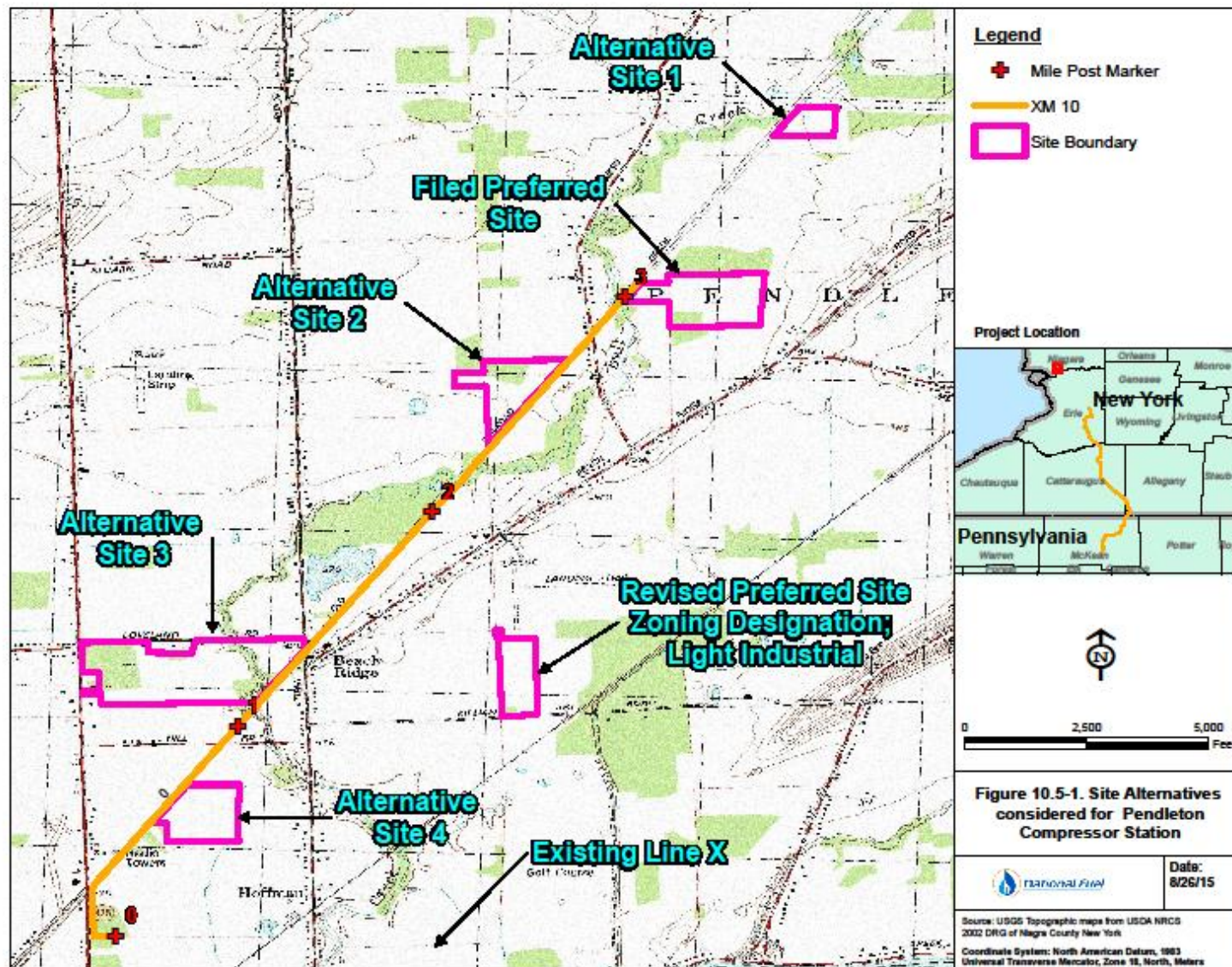




# Northern Access 2016 Project Town of Pendleton Update Meeting August 31, 2015

Docket Number CP15-115



# Compressor Station Site

- Monitored 24/7 by local Gas Dispatch Center and on-site safety control systems
- Highly trained and qualified personnel
  - On-site daily inspection (M-F)
  - Additional local support available
  - After hours on-call staff available
- State-of-the-art control system:
  - Fire detection
  - Gas detection
  - Automatic emergency shutdown (ESD system)
- 100% Weld XRAY
- Hydrostatic test of piping >150% of MAOP
- Meet or exceed all federal safety codes for design and operation

# Compressor Station Safety

- Low noise exhaust system
- Low noise air intake system
- Acoustically designed compressor buildings
- Building air intake and exhaust sound suppression
- Low speed/noise cooling fans
- Vent/“Blow down” silencers
- Buried gas piping where possible

# Compressor Noise Mitigation

Compressor station will meet or exceed stringent Department of Environmental Conservation (DEC) and Environmental Protection Agency (EPA) permit requirements

- Low-emission technology
- Best available technology – SoLoNox
- Evaluating vent gas recycling
- Air dispersion modeling assures air quality standards (NAAQS) are met for all neighbors

## Low-Emission Technology

- 
- \$451 million investment in Western New York and north central Pennsylvania
    - Total project property tax: \$11.5 million
    - Total project sales tax: \$6.6 million
  - Empire's Annual Estimated Taxes in Niagara County
    - Starpoint Central School: \$1,587,000
    - Niagara-Wheatfield Central School: \$373,000
    - Niagara County: \$748,000
    - Town of Pendleton (fire, water, etc.): \$103,000
    - Town of Wheatfield (fire, sewer, etc.): \$25,000
    - Total Estimated Property Taxes: \$2,837,000 (\$2.5 million incremental)
    - Total Niagara County sales tax: \$2.403 million
  - Local company with more than 100 years in the area
  - North American sourced pipe and compression

# Local Impact





- Ongoing work with local companies
  - Consulting services
- Creating jobs during construction
  - Approximately 1,000-1,200 jobs
    - \$138 million in payroll impact for 3<sup>rd</sup> party labor and services
  - Local labor pool for many trades
  - Inspection and project management staff
- Support local businesses during construction, operation and maintenance
  - Contractors
  - Material
  - Services
- Enable economically produced gas to enter the North American pipeline grid and Western NY utility markets
- Conservation deed restriction at Pendleton Compressor Station for all property acquired greater than approximately 5-8 acres - forever preserve "buffer acreage"

# Local Impact





Oakfield CS



Porterville CS

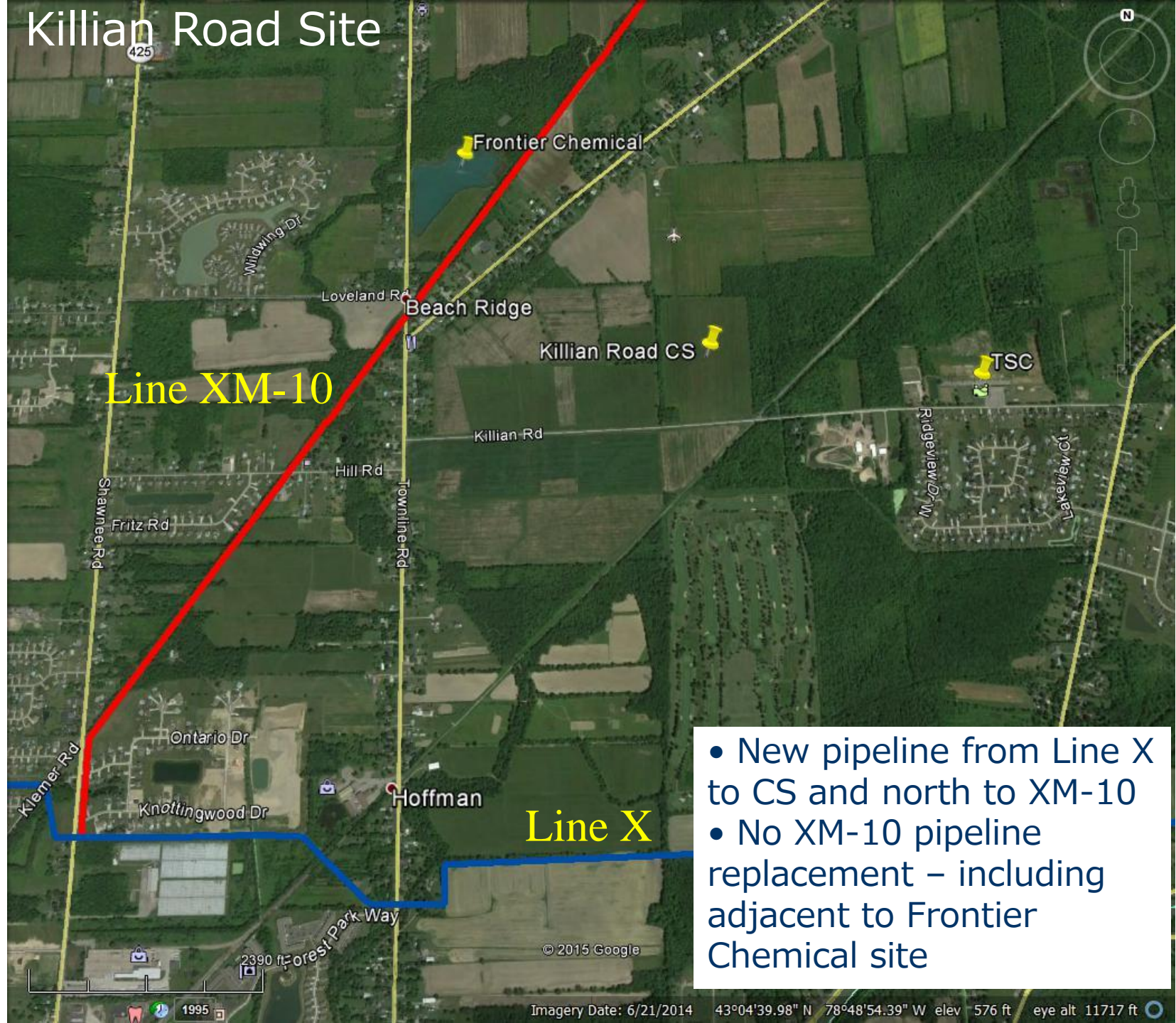


**Existing Stations**





# Killian Road Site

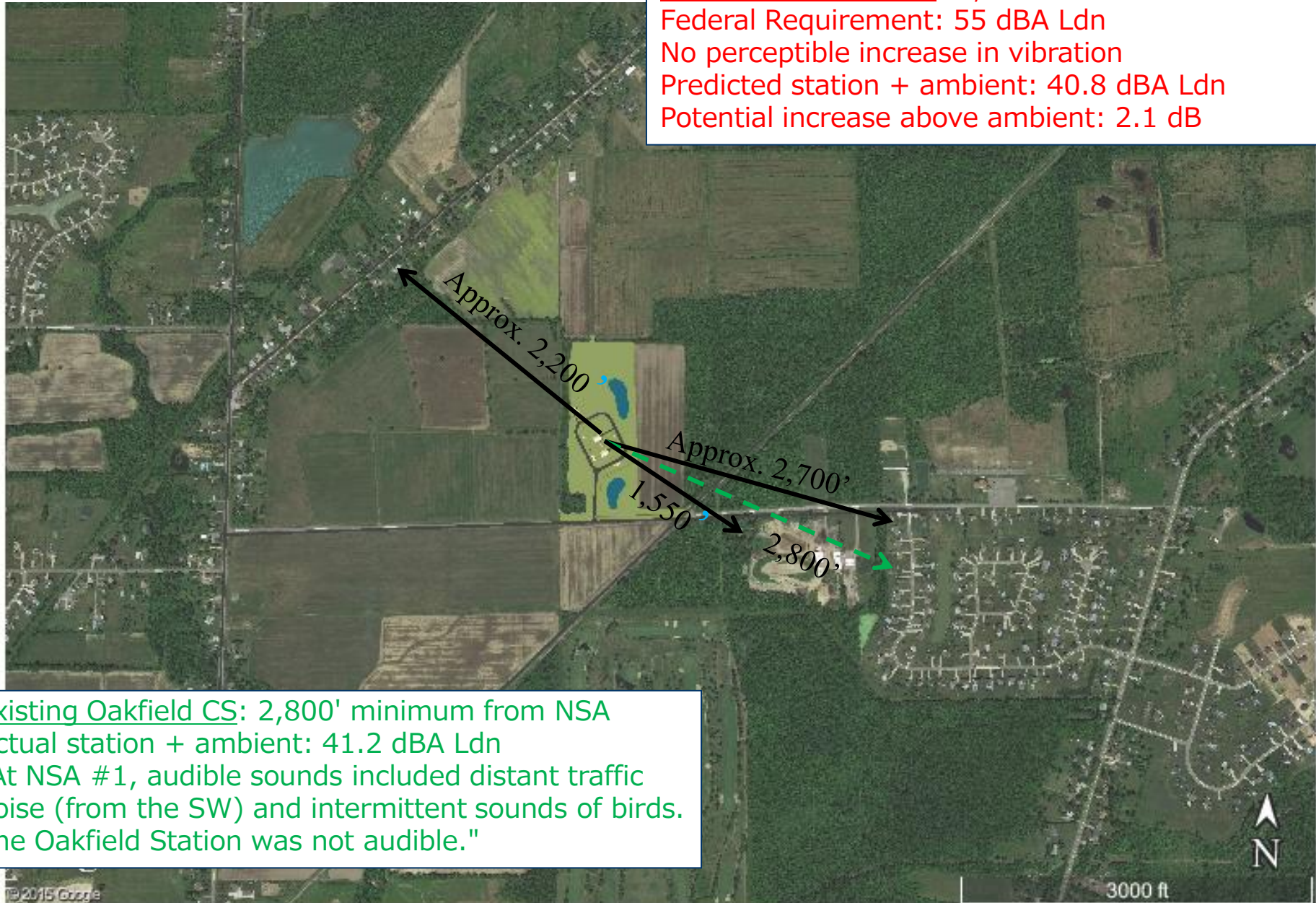


- New pipeline from Line X to CS and north to XM-10
- No XM-10 pipeline replacement – including adjacent to Frontier Chemical site



# Increased Distance from Residential Development

Filed Aiken Road Site: 1,550' minimum from NSA  
Federal Requirement: 55 dBA Ldn  
No perceptible increase in vibration  
Predicted station + ambient: 40.8 dBA Ldn  
Potential increase above ambient: 2.1 dB



Existing Oakfield CS: 2,800' minimum from NSA  
Actual station + ambient: 41.2 dBA Ldn  
"At NSA #1, audible sounds included distant traffic noise (from the SW) and intermittent sounds of birds. The Oakfield Station was not audible."



- L1 zoning versus R2 zoning
  - Essential Services Provision
- Increased distance from residential development
  - 2,200 to 2,800 feet versus 1,550 feet
  - Further reduces noise
  - Extensive wooded buffer between site and Ridgeview Drive subdivision
- Increased distance from Starpoint Central School: 2.8 miles versus 1.3 miles
- Avoid pipeline construction adjacent to Frontier Chemical Site
- Abandon and restore Aiken Rd Meter/Odorizer Station – incorporate in new station design within enclosure

## Benefits & Commitments

- Additional aesthetic and noise commitments
  - Retained architect to assist
  - Building architectural treatments
  - Agricultural design
  - Exhaust Silencer Enclosure - Silo
  - Conservation planting
  - Berms and evergreen visual barrier
  - Site layout to reduce sightlines
  - Minimize visible above grade infrastructure
- Improved/safer site access
- Same tax benefits
- Community Benefits Agreement

## Benefits & Commitments

National Fuel: Pendleton, NY - view from Killian Road



**Preliminary Conceptual View**

- Community Outreach focused on new site
- Noise and environmental/engineering studies
- Pipeline Routing and Surveys
- Compressor Station Site Tours
- Begin Site Plan Approval Process
- Begin Community Benefit Discussion
- Empire Public Meeting
- FERC Filing Amendment
- FERC Scoping (as required by FERC)

## Next Steps